



Solar powering a green future™

STP210 - 18/Ub -1  
STP200 - 18/Ub -1  
STP190 - 18/Ub -1

# 200 Watt

## POLY-CRYSTALLINE SOLAR PANEL

### Features

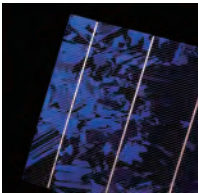
- High conversion efficiency based on innovative photovoltaic technologies
- High reliability with guaranteed +/-3% power output tolerance
- Withstands high wind-pressure and snow load, and extreme temperature variations

### Quality and Safety

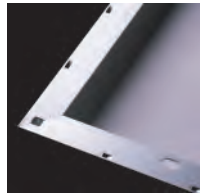
- 25-year power output transferable warranty
- Rigorous quality control meeting the highest international standards
- ISO 9001:2000 (Quality Management System) and ISO 14001:2004 (Environmental Management System) certified factories manufacturing world class products
- UL listings: UL1703, cULus, Class C fire rating, conformity to CE

### Recommended Applications

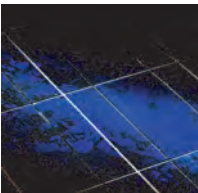
- On-grid utility systems
- On-grid commercial systems
- Off-grid ground mounted systems



Suntech's technology yields improvements to BSF structure and anti-reflective coating to increase conversion efficiency



Unique design on drainage holes and rigid construction prevents frame from deforming or breaking due to freezing weather and other forces



The panel provides more field power output through an advanced cell texturing and isolation process, which improves low irradiance performance

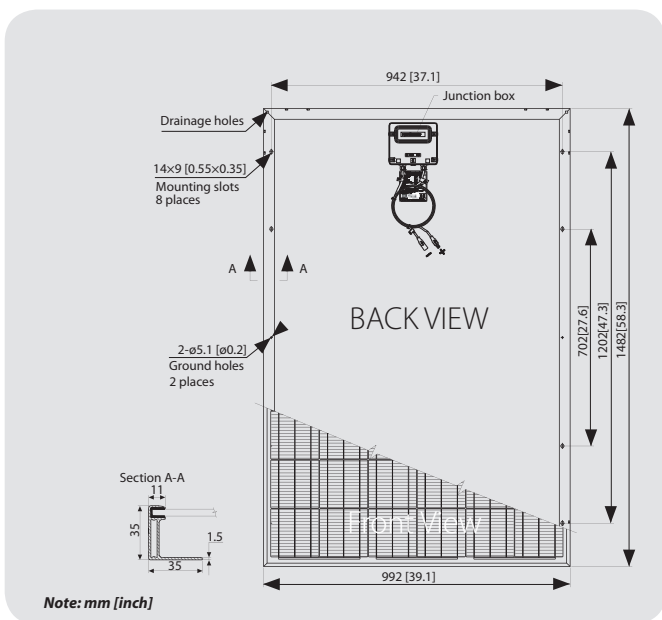


Suntech was named Frost and Sullivan's 2008 Solar Energy Development Company of the Year

### Electrical Characteristics

Characteristics	STP210-18/Ub-1	STP200-18/Ub-1	STP190-18/Ub-1
Open - Circuit Voltage (Voc)	33.6V	33.4V	33V
Optimum Operating Voltage (Vmp)	26.4V	26.2V	26V
Short - Circuit Current (Isc)	8.33A	8.12A	7.89A
Optimum Operating Current (Imp)	7.95A	7.63A	7.31A
Maximum Power at STC (Pmax)	210Wp	200Wp	190Wp
Operating Temperature	-40°C to +85°C	-40°C to +85°C	-40°C to +85°C
Maximum System Voltage	600V DC	600V DC	600V DC
Maximum Series Fuse Rating	20AMPS	20AMPS	20AMPS
Power Tolerance	±3 %	±3 %	±3 %

STC: Irradiance 1000W/m<sup>2</sup>, Module temperature 25°C, AM=1.5



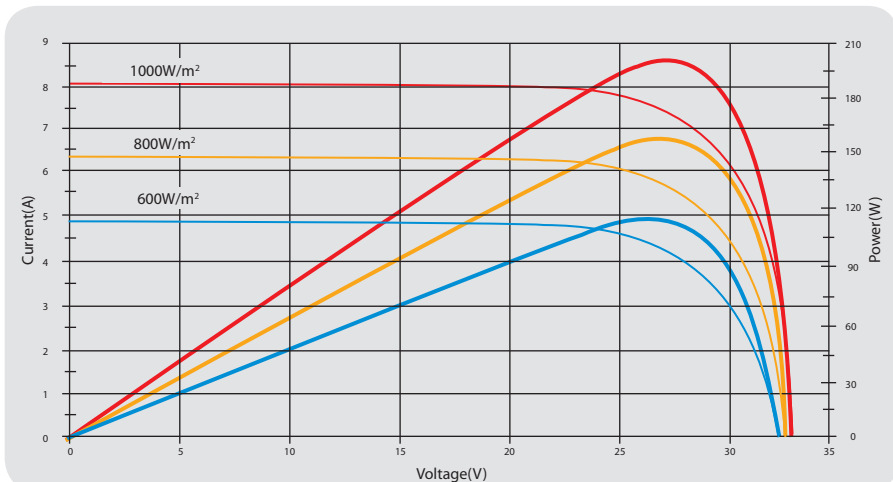
### Mechanical Characteristics

Solar Cell	Poly-crystalline 156x156mm (6inch)
No. of Cells	54 (6x9)
Dimensions	1482x992x35mm (58.3x39.1x1.4inch)
Weight	16.8kg (37.0lbs.)
Front Glass	3.2 mm (0.13inch) tempered glass
Frame	Anodized aluminium alloy
Junction Box	IP65 rated
Output Cables	LAPP (4.0mm <sup>2</sup> ), asymmetrical lengths (-) 1200mm (47.2inch) and (+) 800mm (31.5inch), MC Plug Type IV connectors

### Temperature Coefficients

Nominal Operating Cell Temperature (NOCT)	45°C±2°C
Temperature Coefficient of Pmax	-(0.47 ± 0.05) %/°C
Temperature Coefficient of Voc	-(0.34 ± 0.01) %/°C
Temperature Coefficient of Isc	(0.055 ± 0.01) %/°C

Current-Voltage & Power-Voltage Curve (200W)



Temperature Dependence of Isc, Voc, Pmax

